

GROSS LOAD CAPACITY WHEN USED AS A WEIGHT CARRYING HITCH: 2,000 LBS. TRAILER WEIGHT & 200 LBS. TONGUE WEIGHT.

*****DO NOT EXCEED VEHICLE MANUFACTURER'S RECOMMENDED TOWING CAPACITY.*****

WARNING: ALL NON-TRAILER LOADS APPLIED TO THIS PRODUCT MUST BE SUPPORTED BY 18050 STABILIZING STRAPS.

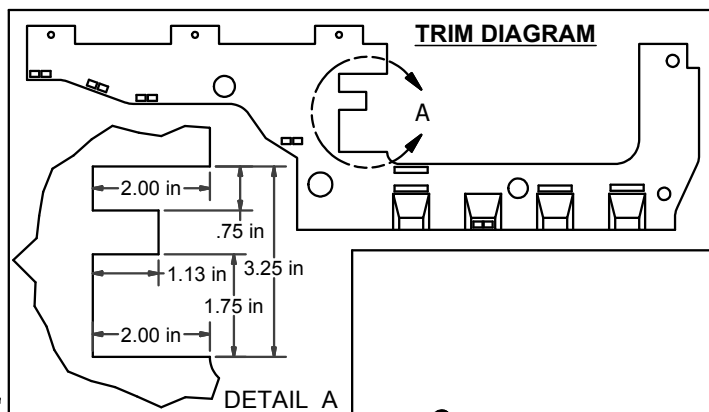
**** FAILURE TO PROPERLY SUPPORT NON-TRAILER LOADS WILL VOID PRODUCT WARRANTY****

HAVING INSTALLATION QUESTIONS? CALL TECHNICAL SUPPORT AT 1-800-798-0813

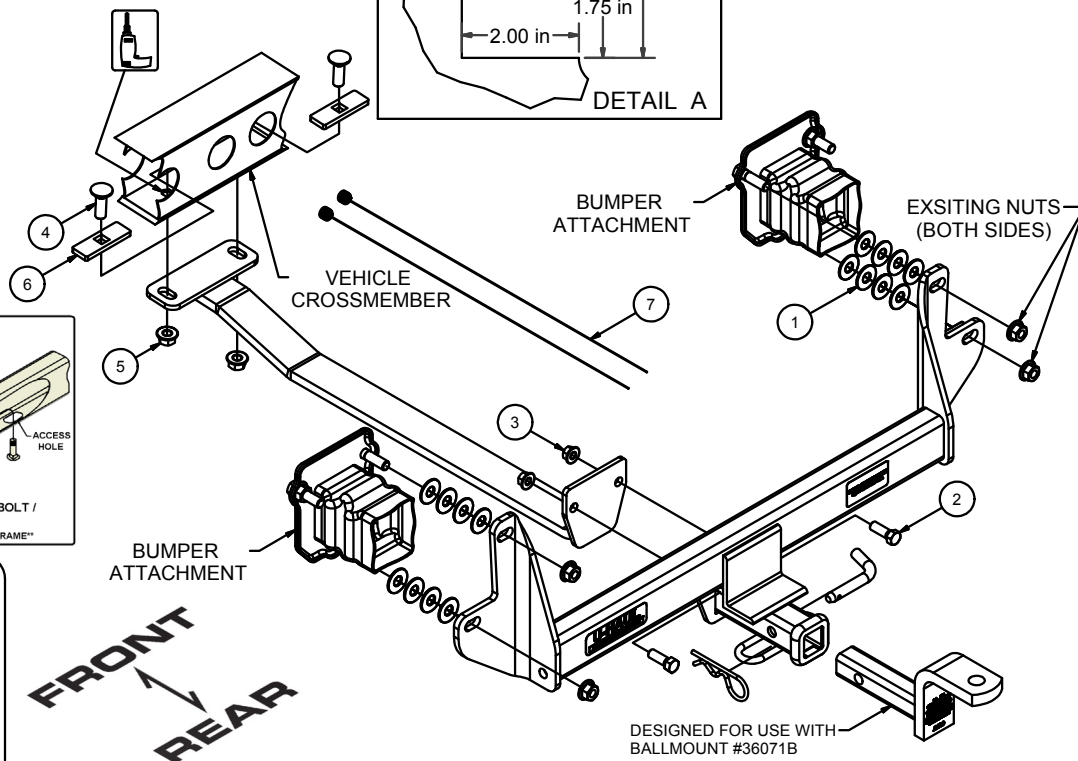
Parts List			
ITEM	QTY	PART NUMBER	DESCRIPTION
1	16	7/16 WASHER	WASHER
2	2	7/16-14 x 1 1/4	HEX BOLT
3	2	7/16-14	HEX FLANGE NUT
4	2	1/2-13 x 1 1/2	CARRIAGE BOLT
5	2	HFN 1213	HEX FLANGE NUT
6	2	CM-SP6	.250 x 1.00 x 3.00" SQUARE HOLE SPACER
7	2	1_2 FISHWIRE	1/2" FISHWIRE

TOOLS REQUIRED	
RATCHET	
8mm & 10mm SOCKETS	
11/16" & 1/2" SOCKETS	
18mm OPEN END/BOX WRENCH	
5/8" OPEN END/BOX WRENCH	
SMALL DISK GRINDER	
TORQUE WRENCH	

DRILL & 17/32" DRILL BIT REQUIRED ON SOME MODELS



ON SOME MODELS



FISHWIRE TECHNIQUE

INSERT COILED END OF FISHWIRE TOOL THROUGH HITCH MOUNTING HOLE IN VEHICLE FRAME RAIL AND OUT THE ACCESS HOLE. PASS COILED END OF FISHWIRE THROUGH SPACER AND THREAD BOLT INTO COIL. KINK WIRE TO KEEP SPACER SEPARATE FROM BOLT AS SHOWN. PULL FISHWIRE, SPACER, AND BOLT THROUGH FRAME AND OUT MOUNTING HOLE. USE FISHWIRE TO GUIDE HITCH DURING MOUNTING AND PREVENT LOSS OF BOLT / SPACER INSIDE FRAME RAIL.

NOTE: SOME VEHICLES MAY FISHWIRE THROUGH END OF FRAME

HITCH WEIGHT: 35 LBS.

INSTALL TIME

PROFESSIONAL: 30 MINUTES

NOVICE (DIY): 60 MINUTES

INSTALL NOTES:

- DRILLING REQUIRED ON SOME MODELS
- FISHWIRE HARDWARE

INSTALLATION STEPS

1. Remove (14) fasteners which secure (2) underbody panels. These will be re-installed in STEP 9.
2. Remove (2) 12mm nuts from each bumper attachment, as shown above. These will be re-used in STEP 4.
3. Place (4) 7/16" washers on each stud where a nut was removed in STEP 2.
4. Lift the hitch into position over studs and secure with existing 12mm nuts.
5. Fishwire 1/2" carriage bolts and SP-6 spacers into vehicle crossmember, as shown. (See FISHWIRE TECHNIQUE above) Note: If holes are not present, use mounting strap as a template to mark & drill 17/32" holes.
6. Raise mounting strap into position and attach to vehicle crossmember with 1/2" flange nuts.
7. Attach mounting strap to the hitch using 7/16" fasteners, as shown above.
8. Torque all 7/16" hardware to 70 ft-lbs, 12mm hardware to 82 ft-lbs, and 1/2" hardware to 110 ft-lbs.
9. Trim (1) underbody panel. (See TRIM DIAGRAM above) Re-install both underbody panels.

PERIODICALLY CHECK THIS RECEIVER HITCH TO ENSURE THAT ALL FASTENERS ARE TIGHT AND THAT ALL STRUCTURAL COMPONENTS ARE SOUND.