

INSTALLATION INSTRUCTIONS

VEHICLE

HITCH NO.

DODGE VAN

75140

EQUIPMENT REQUIRED: HACKSAW, PLIERS

WIRING ACCESS LOCATION: SUV5

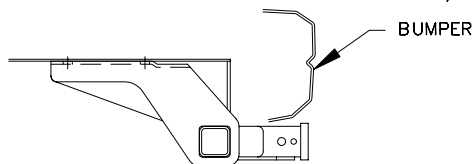
DRILL BITS: NONE

HITCH REQUIRES 5/8" PIN AND CLIP IF STABILIZING PIN IS NOT INSTALLED.

WRENCHES: (TIGHTEN ALL FASTENERS WITH TORQUE WRENCH) 5/8, 11/16, 3/4, 7/8

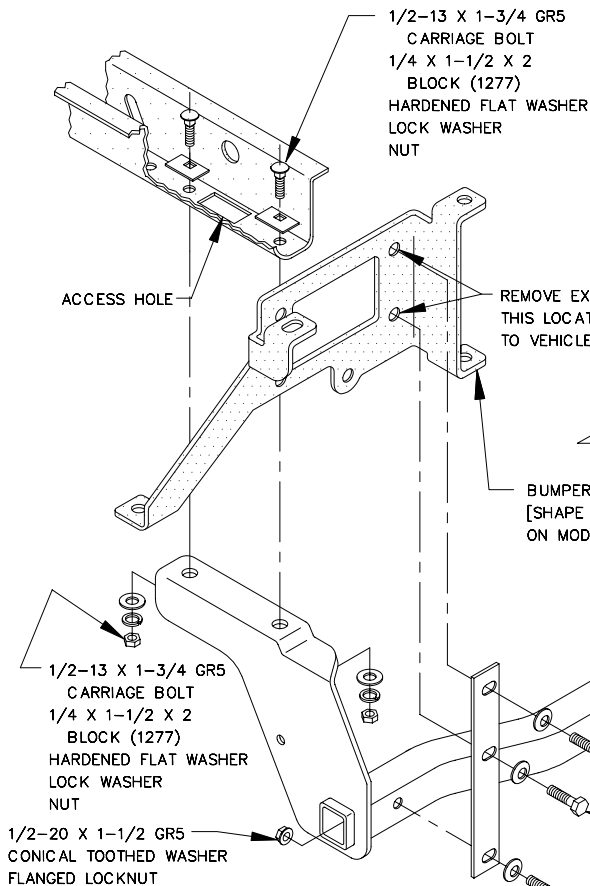
DO NOT EXCEED LOWER OF
TOWING VEHICLE MFR'S RATINGS OR

HITCH TYPE ▼	MAX GROSS TRLR WT(LB)	MAX TONGUE WT(LB)
WEIGHT DISTRIBUTING	10,000	1000
WEIGHT CARRYING BALL MOUNT	5000	500

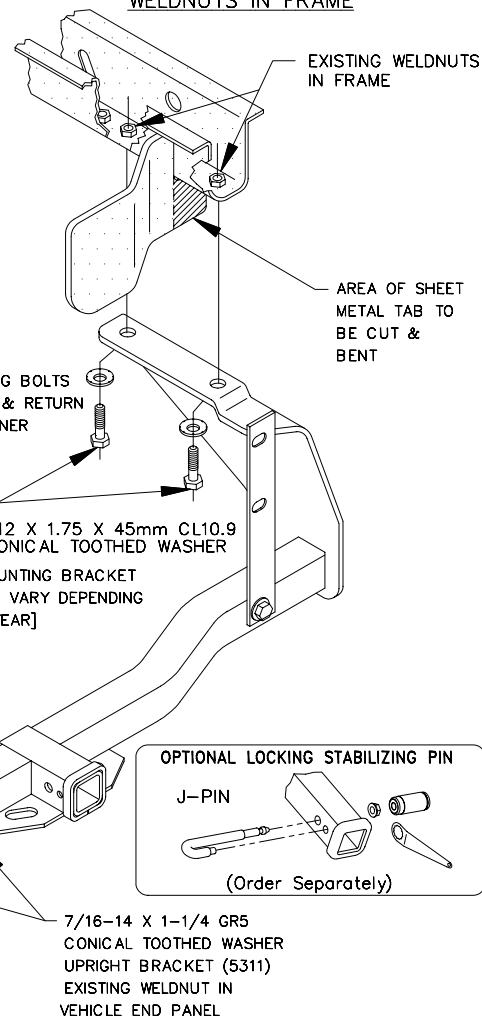


HITCH SHOWN IN PROPER POSITION

FASTENER COMBINATION
SHOWN FOR VEHICLES WITHOUT
WELDNUTS IN FRAME



FASTENER COMBINATION SHOWN
FOR VEHICLES WITH EXISTING
WELDNUTS IN FRAME



OPTIONAL LOCKING STABILIZING PIN

J-PIN

(Order Separately)

FOR STEP BUMPER APPLICATION - 1998 AND LATER:

1. LOOSEN TWO (2) OUTSIDE BUMPER BRACKET BOLTS ON FACE OF BUMPER.
2. REMOVE THREE (3) RETAINING BOLTS (BUMPER TO BUMPER BRACKET) AND ROTATE STEP BUMPER REARWARD.

CAUTION: WIRING HARNESS IS LOCATED INSIDE PASSENGER'S SIDE FRAME RAIL. DO NOT SANDWICH WIRES BETWEEN FRAME RAIL AND FASTENERS.

NOTE: IF VEHICLE HAS HEAT SHIELD, REMOVE ONE (1) SCREW FROM BOTTOM OF FRAME RAIL SO THAT BRACKET WILL SIT FLAT ON BOTTOM OF FRAME RAIL. RETURN SCREW TO VEHICLE OWNER.

FOR ALL APPLICATIONS:

1. REMOVE TWO (2) INBOARD BOLTS ON BUMPER MOUNTING BRACKET, EACH SIDE, AS INDICATED ABOVE. RETURN BOLTS TO VEHICLE OWNER. CUT SHEET METAL TAB, EACH SIDE AS INDICATED ABOVE. BEND TABS OUT OF THE WAY TO PROVIDE CLEARANCE FOR HITCH SIDE BRACKETS.
2. FISHWIRE FASTENERS THRU ACCESS HOLE AS SHOWN ABOVE. NOTE: VEHICLES WITH WELDNUTS IN FRAME, INSTALL M12 HEX BOLTS AND CONICAL TOOTHED WASHERS AS SHOWN ABOVE.
3. RAISE HITCH INTO POSITION AND INSTALL REMAINING FASTENERS AS SHOWN ABOVE. REINSTALL STEP BUMPER.

TIGHTEN ALL 7/16-14 GR5 FASTENERS TO 50 LB.-FT.

TIGHTEN ALL 1/2-13 GR5 FASTENERS TO 75 LB.-FT.

TIGHTEN ALL 1/2-20 GR5 FASTENERS TO 55 LB.-FT.

TIGHTEN ALL M12 CL10.9 FASTENERS TO 92 LB.-FT.

THIS PRODUCT COMPLIES WITH SAFETY SPECIFICATIONS AND REQUIREMENTS FOR CONNECTING DEVICES AND TOWING SYSTEMS OF THE STATE OF NEW YORK AND V.E.S.C. REGULATION V-5.

APPROX WEIGHT (LB.)

40

FASTENER KIT

F75140

NOTE: Check hitch frequently, making sure all fasteners and ball are properly tightened. If hitch is removed, plug all holes in trunk pan or other body panels to prevent entry of water and exhaust fumes. A hitch or ball which has been damaged should be removed and replaced. Observe safety precautions when working beneath a vehicle and wear eye protection. Follow car maker's specs for maximum trailer weight and tongue weight. Do not cut access or attachment holes with a torch.

TOWING PRODUCTS
Plymouth, Michigan