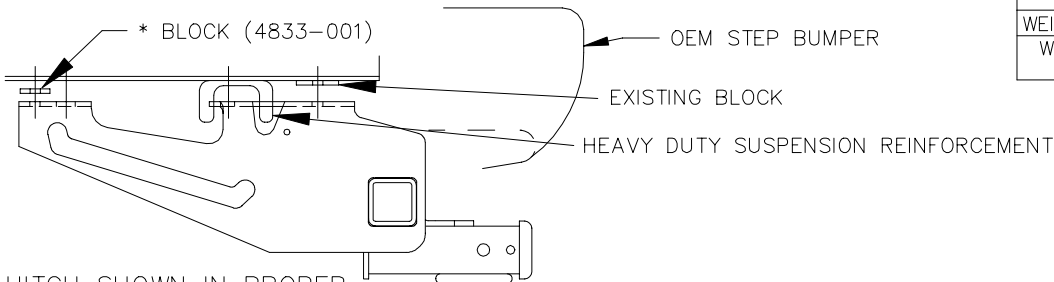


INSTALLATION INSTRUCTIONS

EQUIPMENT REQUIRED:
WIRING ACCESS LOCATION: PU3
DRILL BITS: NONE
HITCH REQUIRES 5/8" PIN AND CLIP IF STABILIZING PIN IS NOT INSTALLED.
WRENCHES: (TIGHTEN ALL FASTENERS WITH TORQUE WRENCH) 7/8, 13mm, 18mm, 19mm

VEHICLE	HITCH NO.
CHEVROLET/GMC FULL SIZE PICKUPS (ALL MODELS) (INCLUDING AFTERMARKET) (10" DEEP DROP BUMPERS)	41528

	DO NOT EXCEED LOWER OF TOWING VEHICLE MFR'S RATINGS OR	
HITCH TYPE ▼	MAX GROSS TRLR WT(LB)	MAX TONGUE WT(LB)
WEIGHT DISTRIBUTING	10,000	1000
WEIGHT CARRYING BALL MOUNT	6000	600



HITCH SHOWN IN PROPER
POSITION FOR 6 FT BEDS
WITH OPTIONAL HEAVY
DUTY SUSPENSION.

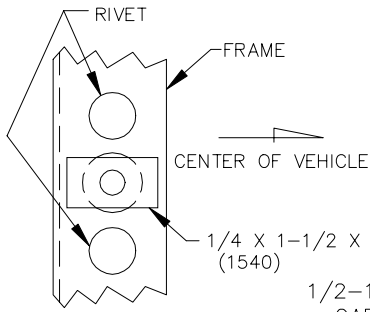


FIGURE 1

- 1/2-13 X 1-3/4 GR5 CARRIAGE BOLT
- 1/4 X 1-1/2 X 2 BLOCK (1540)
- * 3/16 X 1-1/2 X 2 BLOCK (4833-001)
- FLAT WASHER
- LOCK WASHER
- NUT
- TYPICAL BOTH SIDES

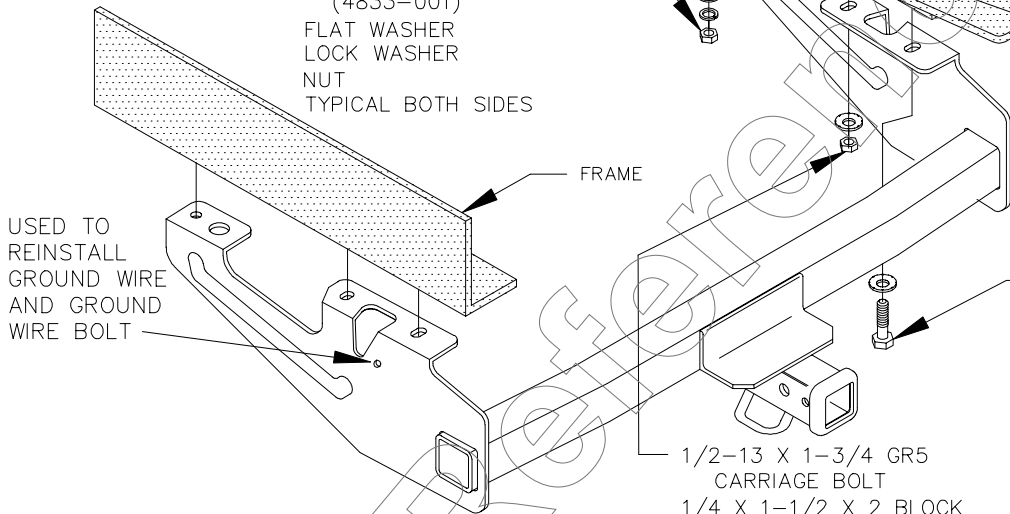


FIGURE 2

- 1/2-13 X 1-3/4 GR5 CARRIAGE BOLT
- 1/4 X 1-1/2 X 2 BLOCK (3719)
- CONICAL WASHER
- NUT
- TYPICAL BOTH SIDES

WARNING:
CHECK CLEARANCE BETWEEN
BRAKE LINE, AXLE, TAILPIPE
AND STOWED SPARE TIRE.

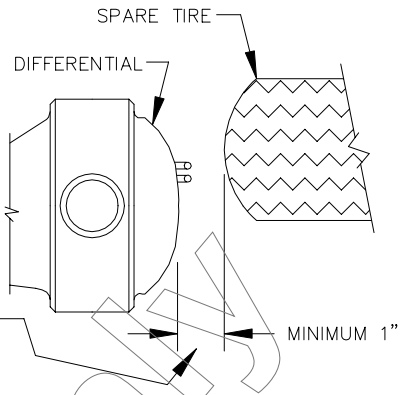


FIGURE 3

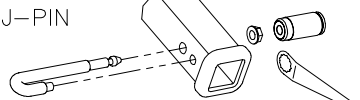
REQ'D FOR VEHICLES
WITHOUT OEM BUMPER
1/4 X 1-1/2 X 2 BLOCK
(1097-002)
LOCK WASHER
NUT

OEM BUMPER BRACKET
TYPICAL BOTH SIDES

EXISTING WELDNUT (OEM)
TYPICAL BOTH SIDES

M12 X 1.75 X 45mm CL10.9
CONICAL TOOTHED WASHER
TYPICAL BOTH SIDES

OPTIONAL LOCKING STABILIZING PIN



(Order Separately)

- * ONLY USED ON 6 FT BEDS WITH HEAVY DUTY SUSPENSION.
- NOTE: ON VEHICLES WITHOUT BUMPER, IT WILL BE NECESSARY TO RELOCATE LICENSE PLATE MOUNTING BRACKET.
- LOWER VEHICLE SPARE TIRE IF PRESENT.
 - REMOVE AND DISCARD M12 HEX BOLTS FROM END OF EACH FRAME RAIL IF PRESENT.
 - REMOVE GROUND WIRE AND GROUND WIRE BOLT, IF PRESENT, ON DRIVER'S SIDE FRAME RAIL.
- NOTE: SOME AFTERMARKET BUMPERS MAY REQUIRE LOOSENING OF ATTACHMENT HARDWARE AND REPOSITIONING OF BUMPER REARWARD.
- LIFT RECEIVER INTO POSITION, LOCATING SLOTS IN RECEIVER OVER WELDNUTS IN VEHICLE FRAME.
NOTE: FOR VEHICLES W/O OEM BUMPER, LOCATE SLOTS IN RECEIVER OVER FORE/AFT SLOT NEAR END OF FRAME.
 - INSTALL M12 HEX BOLT (SUPPLIED) AND TOOTHED WASHER THROUGH RECEIVER INTO WELDNUT IN VEHICLE FRAME.
NOTE: SEE ILLUSTRATION FOR PLACEMENT OF FASTENERS ON VEHICLES W/O OEM BUMPER.
 - INSTALL REMAINING FASTENERS AS SHOWN IN FIGURE 2.
 - REINSTALL GROUND WIRE AND GROUND WIRE BOLT TO HOLE IN SIDE OF SIDE BRACKET.
- NOTE: ON 6' BED MODELS, 1/4 X 1-1/2 X 2 BLOCK (1540) LOCATED AT FORWARD-MOST ATTACHMENT ON DRIVER'S SIDE MAY BE ORIENTED AS SHOWN IN FIGURE 1, IF NECESSARY, TO INSURE CLEARANCE OF RIVETS.
BLOCK MUST SIT FLAT ON FRAME.
- TIGHTEN M12 CL10.9 FASTENERS TO 75 LB.-FT.
TIGHTEN 1/2-13 GR5 FASTENERS TO 75 LB.-FT.

WARNING: CHECK CLEARANCE BETWEEN BRAKE LINE, AXLE, TAILPIPE, AND STOWED SPARE TIRE. MINIMUM RECOMMENDED CLEARANCE IS 1". IF CLEARANCE IS INSUFFICIENT SPARE TIRE MUST BE STOWED ELSEWHERE.

THIS PRODUCT COMPLIES WITH SAFETY SPECIFICATIONS AND REQUIREMENTS FOR CONNECTING DEVICES AND TOWING SYSTEMS OF THE STATE OF NEW YORK AND V.E.S.C. REGULATION V-5.

APPROX WEIGHT (LB.)	50	FASTENER KIT NO.	F41528
---------------------	----	------------------	--------

NOTE: Check hitch frequently, making sure all fasteners and ball are properly tightened. If hitch is removed, plug all holes in trunk pan or other body panels to prevent entry of water and exhaust fumes. A hitch or ball which has been damaged should be removed and replaced. Observe safety precautions when working beneath a vehicle and wear eye protection. Follow car maker's specs for maximum trailer weight and tongue weight. Do not cut access or attachment holes with a torch.