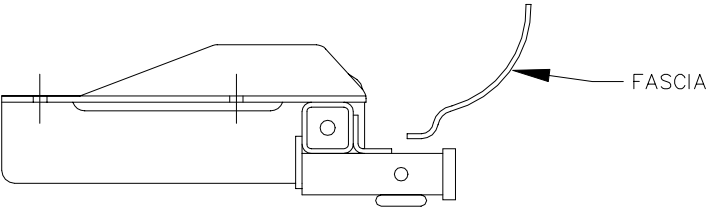


# INSTALLATION INSTRUCTIONS

EQUIPMENT REQUIRED:  
WIRING ACCESS LOCATION: PC1, PC2  
DRILL BITS: 1/2  
HITCH REQUIRES 1/2" PIN & CLIP  
WRENCHES: (TIGHTEN ALL FASTENERS WITH TORQUE WRENCH) 11/16, 3/4

VEHICLE	HITCH NO.
SAAB MODEL 9-3	36280

3500 LB MAX GROSS TRAILER WT  
300 LB MAX TONGUE WEIGHT  
DO NOT EXCEED TOWING VEHICLE RATINGS



HITCH SHOWN IN PROPER POSITION

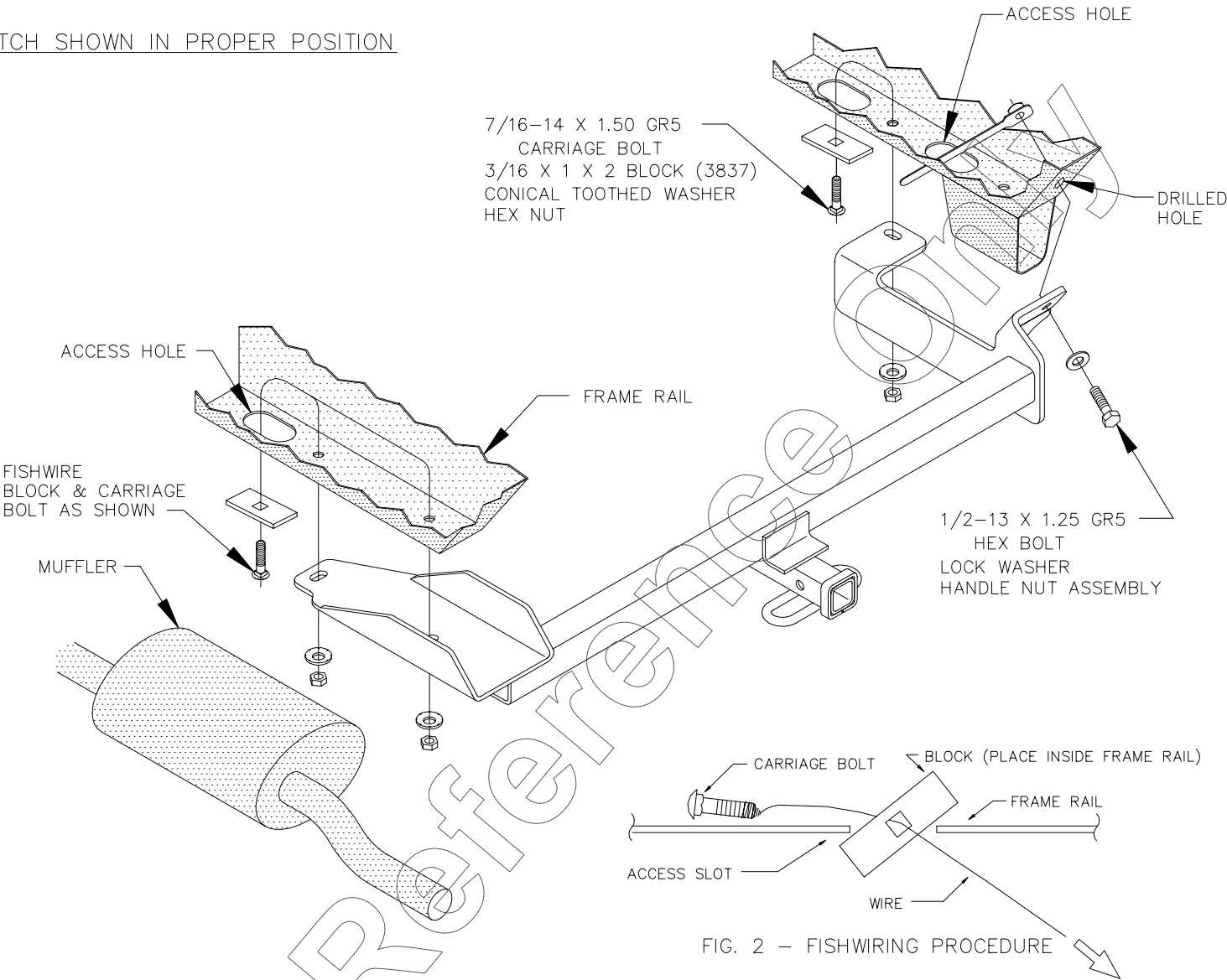


FIG. 2 – FISHWIRING PROCEDURE

1. TEMPORARILY LOWER VEHICLE EXHAUST.
2. RAISE HITCH INTO POSITION.
3. FISHWIRE CARRIAGE BOLTS AND BLOCKS (3837) THRU ACCESS HOLES IN FRAME AND SECURELY TIGHTEN HITCH TO VEHICLE.
4. USING HITCH AS A GUIDE, DRILL 1/2" HOLE IN REAR END OF PASSENGER SIDE FRAME RAIL.
5. INSTALL HANDLE NUT, HEX BOLT & LOCK WASHER AS SHOWN AND TIGHTEN ALL FASTENERS.

TIGHTEN 7/16-14 GR5 FASTENERS TO 50 LB.-FT.  
TIGHTEN 1/2-13 GR5 FASTENERS TO 50 LB.-FT.

DESIGNED FOR USE WITH  
PIN 2210

DRAWBAR 36003 ZINC  
CLIP 2209

DRAWBAR REPLACEMENT KIT  
(INCLUDES PIN & CLIP)  
**36053 ZINC**  
NOTE: REPLACEMENT DRAWBAR  
AVAILABLE ONLY IN KIT. PINS &  
CLIPS AVAILABLE SEPARATELY.

USE ONLY DRAWBAR SHOWN FOR CORRECT BUMPER CLEARANCE & HEIGHT.  
REMOVE DRAWBAR WHEN NOT TOWING  
TO PROTECT DRAWBAR OPENING IN HITCH WHEN NOT TOWING,  
INSERT COVER #2211 (PURCHASED SEPARATELY).

THIS PRODUCT COMPLIES WITH SAFETY SPECIFICATIONS AND REQUIREMENTS FOR CONNECTING DEVICES AND TOWING SYSTEMS OF THE STATE OF NEW YORK AND V.E.S.C. REGULATION V-5.

APPROX WEIGHT (LB.)	29.5	FASTENER KIT NO.	K36280
---------------------	------	------------------	--------

NOTE: Check hitch frequently, making sure all fasteners and ball are properly tightened. If hitch is removed, plug all holes in trunk pan or other body panels to prevent entry of water and exhaust fumes. A hitch or ball which has been damaged should be removed and replaced. Observe safety precautions when working beneath a vehicle and wear eye protection. Follow car maker's specs for maximum trailer weight and tongue weight. Do not cut access or attachment holes with a torch.