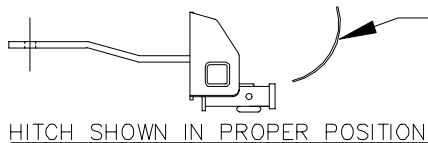


INSTALLATION INSTRUCTIONS

EQUIPMENT REQUIRED:

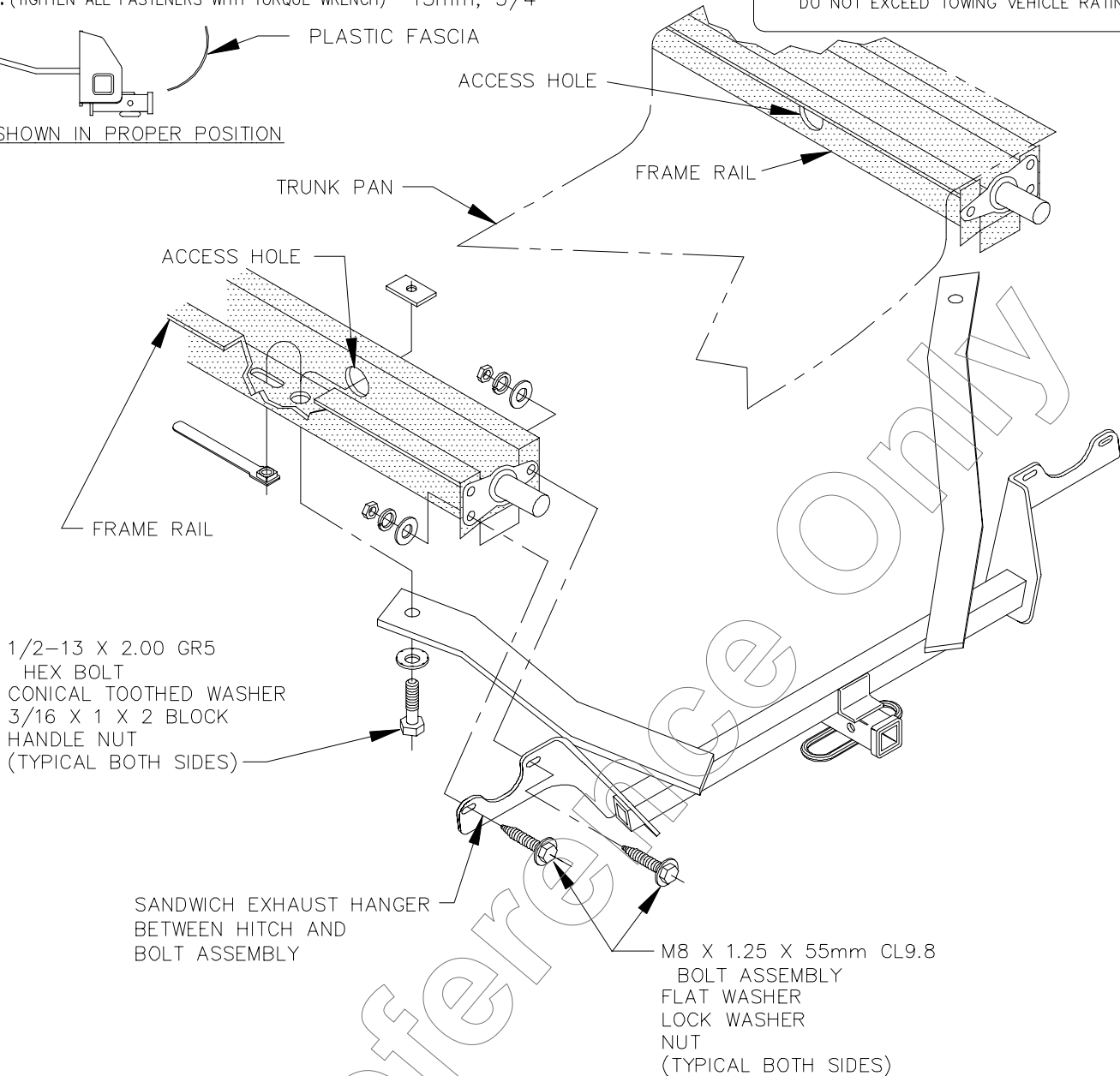
DRILL BITS: NONE

WRENCHES: (TIGHTEN ALL FASTENERS WITH TORQUE WRENCH) 13mm, 3/4



HITCH SHOWN IN PROPER POSITION

3500 LB MAX GROSS TRAILER WT
300 LB MAX TONGUE WEIGHT
DO NOT EXCEED TOWING VEHICLE RATINGS



1. LOWER MUFFLER AND TAIL PIPES. SUPPORT MUFFLER ASSEMBLY WITH A WIRE OR JACK TO PREVENT EXCESS TRAVEL WHICH COULD BE DAMAGING TO EXHAUST SYSTEM.
2. REMOVE THE BOTTOM OUTBOARD E/A BOLT, EACH SIDE, AND INBOARD E/A BOLT, EACH SIDE. RETURN E/A BOLTS TO CUSTOMER.
3. RAISE HITCH INTO POSITION BETWEEN E/A UNIT AND EXHAUST HANGER AND INSTALL M8 FASTENERS AS SHOWN.
4. INSERT BLOCK THROUGH THE ACCESS HOLE ON THE INSIDE OF THE FRAME. INSTALL THE HANDLE HANDLE NUT THROUGH THE SLOT FORWARD OF THE HITCH ATTACHMENT.
5. INSTALL 1/2" FASTENERS AS SHOWN.
6. REATTACH MUFFLER AND TAIL PIPES.

TIGHTEN M8 CL9.8 FASTENERS TO 25 LB.-FT.
TIGHTEN 1/2 GR5 FASTENERS TO 50 LB.-FT.

COMPLETE HITCH INCLUDES

PIN 2210

CLIP 2209

36013 ZINC DRAWBAR OR 36014 CHROME

DRAWBAR REPLACEMENT KIT (INCLUDES PIN & CLIP)

36063 ZINC
36064 CHROME

NOTE: REPLACEMENT DRAWBAR AVAILABLE ONLY IN KIT. PINS & CLIPS AVAILABLE SEPARATELY.

USE ONLY THE DRAWBAR SHOWN FOR CORRECT BUMPER CLEARANCE AND HEIGHT.
REMOVE DRAWBAR WHEN NOT TOWING
TO PROTECT DRAWBAR OPENING IN HITCH WHEN NOT TOWING, INSERT COVER #2211 (PURCHASED SEPARATELY).

THIS PRODUCT COMPLIES WITH SAFETY SPECIFICATIONS AND REQUIREMENTS FOR CONNECTING DEVICES AND TOWING SYSTEMS OF THE STATE OF NEW YORK AND V.E.S.C. REGULATION V-5.

APPROX WEIGHT (LB.)	FASTENER KIT NO.
38	1130-784

NOTE: Check hitch frequently, making sure all fasteners and ball are properly tightened. If hitch is removed, plug all holes in trunk pan or other body panels to prevent entry of water and exhaust fumes. A hitch or ball which has been damaged should be removed and replaced. Observe safety precautions when working beneath a vehicle and wear eye protection. Follow car maker's specs for maximum trailer weight and tongue weight. Do not cut access or attachment holes with a torch.

