

INSTALLATION INSTRUCTIONS

VEHICLE
MITSUBISHI DIAMANTEHITCH NO.
24568

EQUIPMENT REQUIRED:

DRILL BITS: 1/2

WRENCHES: (TIGHTEN ALL FASTENERS WITH TORQUE WRENCH) 11/16, 7/8

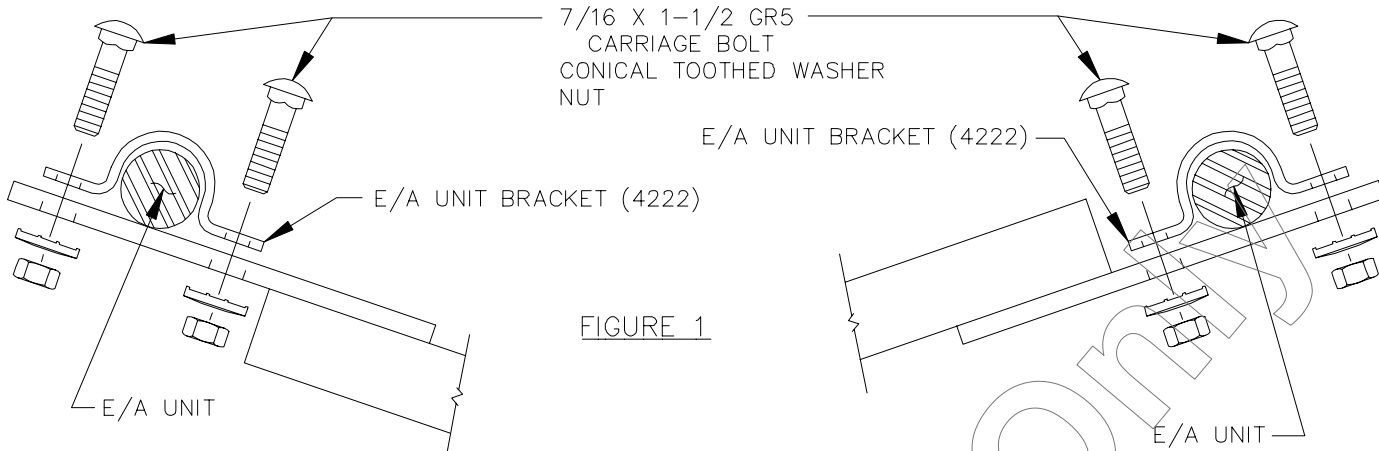
2000 LB MAX GROSS TRAILER WT
200 LB MAX TONGUE WEIGHT
DO NOT EXCEED TOWING VEHICLE RATINGSFASCIA TRIMMING REQUIRED OBTAIN
VEHICLE OWNER APPROVAL BEFORE CUTTING

FIGURE 1

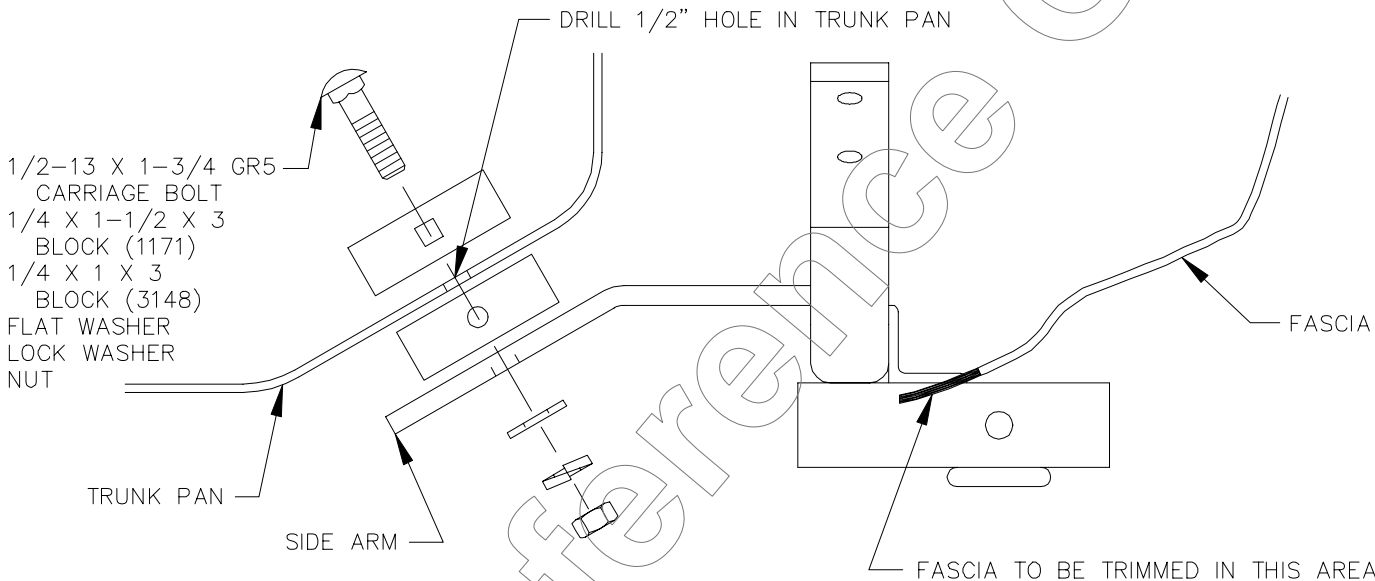
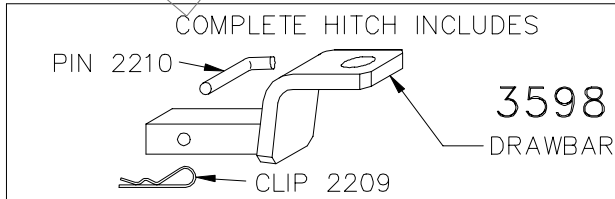


FIGURE 2

1. REMOVE SPARE TIRE AND JACK FROM INSIDE TRUNK.
2. RAISE HITCH INTO POSITION AND LOOSELY ATTACH E/A UNIT BRACKETS AS SHOWN IN FIGURE 1. POSITION HITCH AS FAR FORWARD ON VEHICLE AS POSSIBLE, UNTIL HITCH SIDE ARMS ARE FLUSH WITH VEHICLE TRUNK PAN. TRIM FASCIA AS NEEDED TO ALLOW CLEARANCE FOR HITCH AS SHOWN IN FIGURE 2. TIGHTEN FASTENERS EVENLY.
3. USE HITCH SIDE ARMS AS TEMPLATES TO DRILL 1/2" HOLE IN TRUNK PAN, EACH SIDE.
NOTE: SEAL ALL HOLES DRILLED IN VEHICLE TO PREVENT ENTRY OF EXHAUST FUMES INTO TRUNK.
4. INSTALL REMAINING FASTENERS AS SHOWN IN FIGURE 2.
NOTE: BLOCK (3148) SHOULD FIT INTO OFFSET IN TRUNK PAN SO THAT HITCH SIDE ARMS LIE FLUSH WITH TRUNK PAN.
5. REINSTALL SPARE TIRE AND JACK.

TIGHTEN 7/16 GR5 FASTENERS TO 50 LB.-FT.
TIGHTEN 1/2 GR5 FASTENERS TO 75 LB.-FT.

COMPLETE HITCH INCLUDES

PIN 2210

3598

DRAWBAR

CLIP 2209

DRAWBAR REPLACEMENT KIT
(INCLUDES PIN & CLIP)

3593

NOTE: REPLACEMENT DRAWBAR AVAILABLE ONLY
IN KIT. PINS & CLIPS AVAILABLE SEPARATELY.USE ONLY THE DRAWBAR SHOWN FOR CORRECT BUMPER CLEARANCE AND HEIGHT.
DRAWBAR MUST BE USED IN THE RISE POSITION ONLY.

REMOVE DRAWBAR WHEN NOT TOWING

TO PROTECT DRAWBAR OPENING IN HITCH WHEN NOT TOWING,
INSERT COVER #2211 (PURCHASED SEPARATELY).THIS PRODUCT COMPLIES WITH SAFETY SPECIFICATIONS AND REQUIREMENTS FOR CONNECTING DEVICES AND TOWING
SYSTEMS OF THE STATE OF NEW YORK AND V.E.S.C. REGULATION V-5.

APPROX WEIGHT (LB.)

23

FASTENER KIT NO.

1130-826

NOTE: Check hitch frequently, making sure all fasteners and ball are properly tightened. If hitch is removed, plug all holes in trunk pan or other body panels to prevent entry of water and exhaust fumes. A hitch or ball which has been damaged should be removed and replaced. Observe safety precautions when working beneath a vehicle and wear eye protection. Follow car maker's specs for maximum trailer weight and tongue weight. Do not cut access or attachment holes with a torch.

© Draw-Tite, Inc.

**Draw-Tite, Inc.**40500 Van Born Road
Canton, Michigan 48188

SHEET ____ OF ____