

GROSS LOAD CAPACITY WHEN USED AS A WEIGHT CARRYING HITCH: 3,500 LBS. TRAILER WEIGHT & 350 LBS. TONGUE WEIGHT.

\*\*\*DO NOT EXCEED VEHICLE MANUFACTURER'S RECOMMENDED TOWING CAPACITY.\*\*\*

WARNING: ALL NON-TRAILER LOADS APPLIED TO THIS PRODUCT MUST BE SUPPORTED BY 18050 STABILIZING STRAPS.

\*\* FAILURE TO PROPERLY SUPPORT NON-TRAILER LOADS WILL VOID PRODUCT WARRANTY\*\*

HAVING INSTALLATION QUESTIONS? CALL TECHNICAL SUPPORT AT 1-800-798-0813

		Parts List	
ITEM	QTY	PART NUMBER	DESCRIPTION
1	2	CM-SP1	.250 x 1.50 x 2.00" SQUARE HOLE SPACER
2	2	CM-SP38	1/2" WEDGE SPACER
3	2	1/2-13	HANDLE NUT
4	2	1/2"	LOCK WASHER
5	2	HFN 1213	HEX FLANGE NUT
6	2	1/2-13 x 1 3/4	HEX BOLT
7	2	1/2-13 x 1 3/4	CARRIAGE BOLT

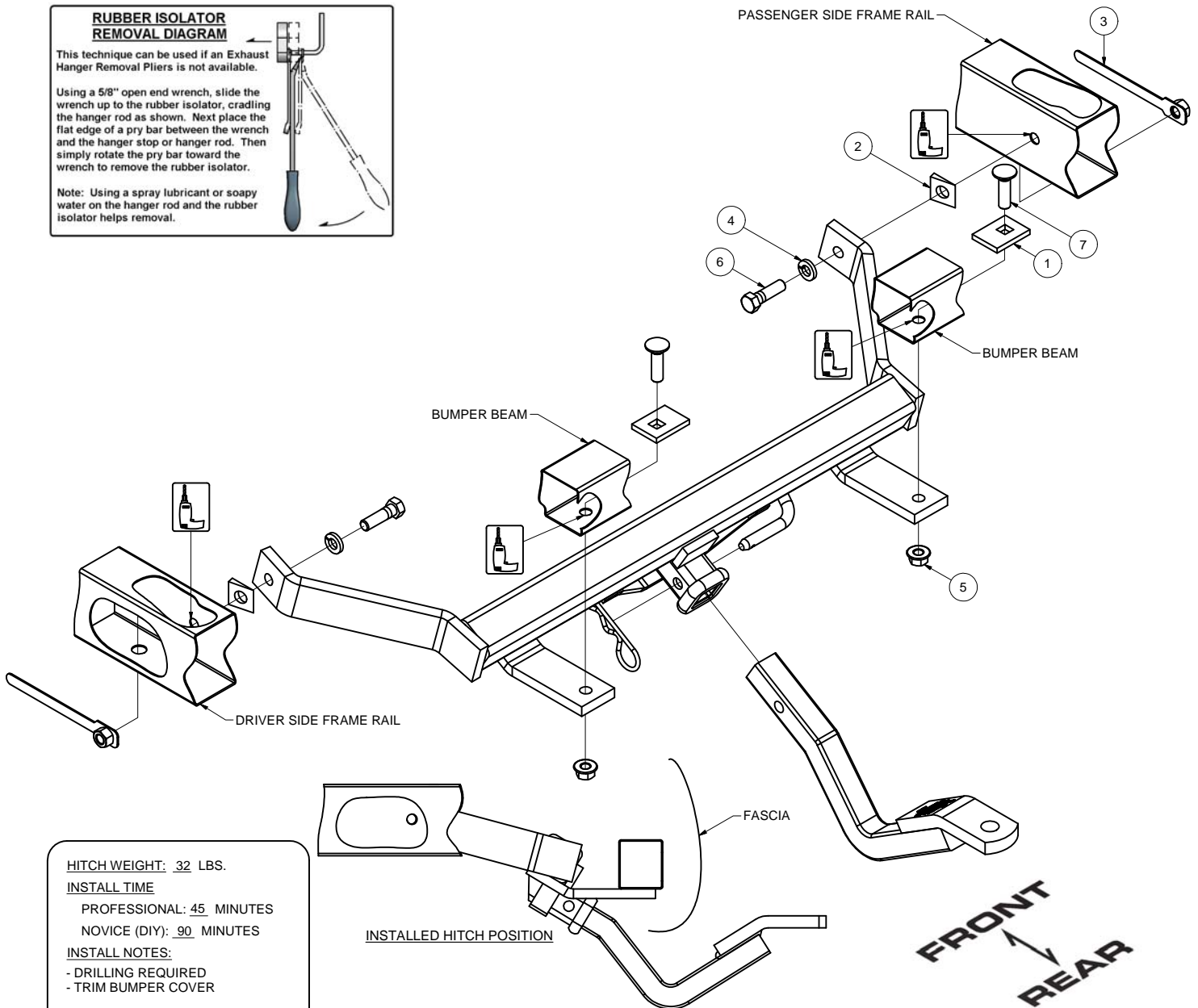
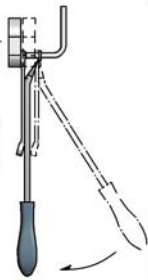
TOOLS REQUIRED	
	RATCHET
	3/4" SOCKET
	TORQUE WRENCH
	DRILL
	1/2" DRILL BIT
	ROTARY TOOL

### RUBBER ISOLATOR REMOVAL DIAGRAM

This technique can be used if an Exhaust Hanger Removal Pliers is not available.

Using a 5/8" open end wrench, slide the wrench up to the rubber isolator, cradling the hanger rod as shown. Next place the flat edge of a pry bar between the wrench and the hanger stop or hanger rod. Then simply rotate the pry bar toward the wrench to remove the rubber isolator.

Note: Using a spray lubricant or soapy water on the hanger rod and the rubber isolator helps removal.



HITCH WEIGHT: 32 LBS.

#### INSTALL TIME

PROFESSIONAL: 45 MINUTES

NOVICE (DIY): 90 MINUTES

#### INSTALL NOTES:

- DRILLING REQUIRED
- TRIM BUMPER COVER

PERIODICALLY CHECK THIS RECEIVER HITCH TO ENSURE THAT ALL FASTENERS ARE TIGHT AND THAT ALL STRUCTURAL COMPONENTS ARE SOUND.

## **INSTALLATION STEPS**

1. Temporarily remove the exhaust hanger. Vehicles with dual exhaust systems will have a hanger attached to each side. Remove both hangers.
  2. Raise hitch into position against bumper beam and inner surface of the vehicle frame rails. Be sure the hitch is centered on vehicle.
  3. Mark bumper cover where bumper cover will need to be trimmed around the hitch brackets. Trim bumper cover to allow the hitch to be positioned directly against the steel bumper beam.
  4. Raise hitch against bumper beam. Using the hitch as a template, drill (2) 1/2" holes into the bumper beam.
  5. Insert 1/2" carriage bolts and CM-SP1 spacers into bumper beam and out drilled holes.
  6. Raise hitch and temporarily secure hitch to vehicle with supplied 1/2" hex flange nuts.
  7. Insert supplied ball mount into hitch and secure it with the pin and clip.
  8. Adjust hitch angle until ball mount tongue is level.
  9. Using the hitch as a template, mark the insides of the frame rails.
  10. Remove hitch and drill the (2) marked holes on the insides of the frame rails.
  11. Reattach the hitch to the bumper beam.
  12. Align holes in hitch with drilled holes in frame rails. Insert the handle nuts through the bottom access hole in the frame rails. Secure the hitch with supplied 1/2" hex bolts and lock washers.
- Note: Intrigue, Century, and Grand Prix models will require the use of the CM-SP38 spacers placed between the hitch and frame rails.
13. Torque 1/2" hardware to 75 lb-ft.
  14. Raise exhaust back into position.

### **NOTES:**

Use only the ball mount supplied with this hitch.

Do not use a weight distributing unit with this hitch.

If a carrying device such as cargo carrier or bike rack is used with this hitch, the loaded weight should not exceed 200 lbs. including the weight of the carrier.

**PERIODICALLY CHECK THIS RECEIVER HITCH TO ENSURE THAT ALL FASTENERS ARE TIGHT AND THAT ALL STRUCTURAL COMPONENTS ARE SOUND.**