

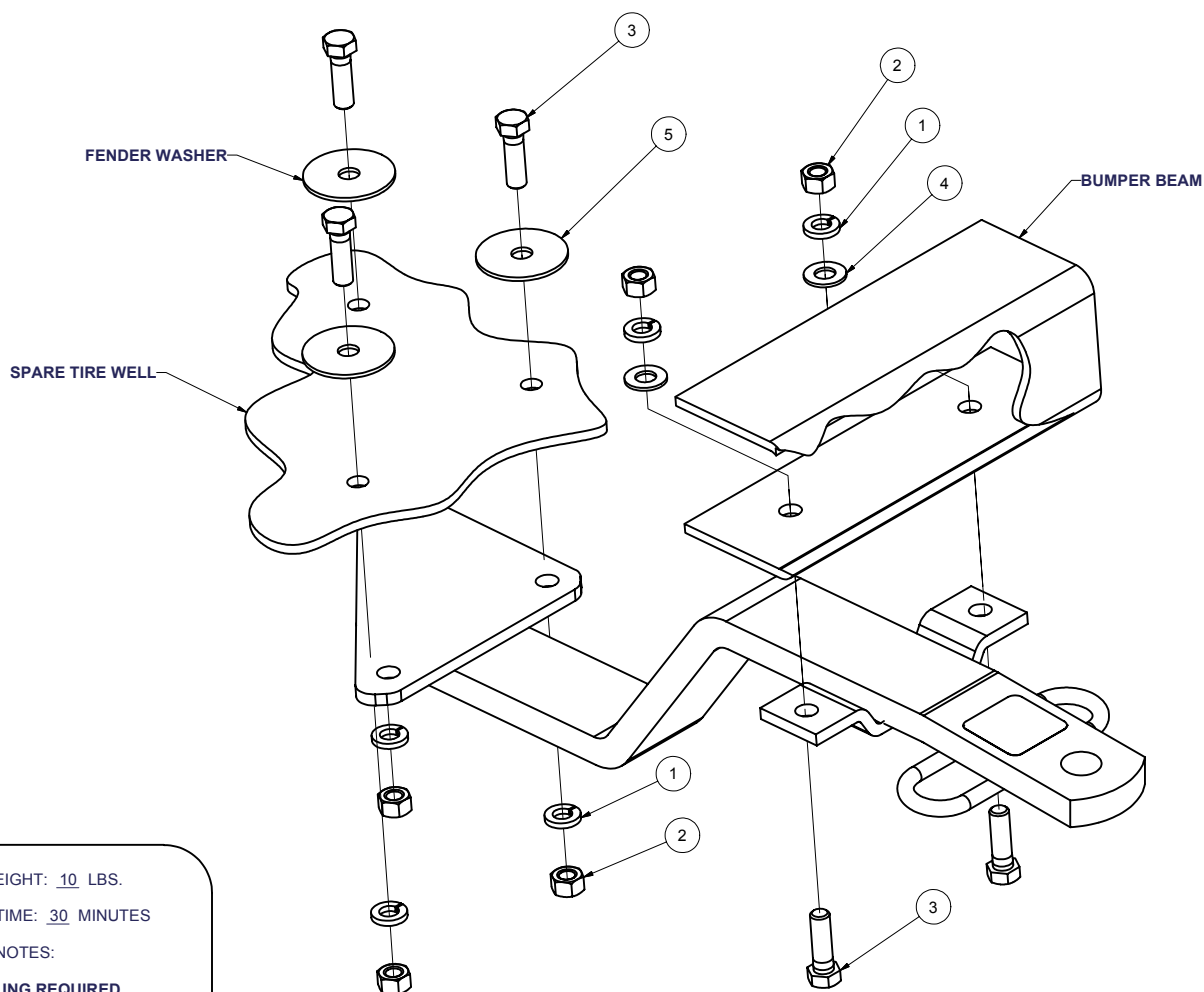
11614 /28033 / 2173361977 - 1985 MERCEDES BENZ SEDAN, 123 CHASSIS, 230, 240,
280, 300, INCLUDING C, CE, CD, D, AND E VERSIONS.

6/29/2007

GROSS LOAD CAPACITY WHEN USED AS A WEIGHT CARRYING HITCH: 1500 LBS. TRAILER WEIGHT & 150 LBS. TONGUE WEIGHT.

*****DO NOT EXCEED VEHICLE MANUFACTURER'S RECOMMENDED TOWING CAPACITY.*****

Parts List			
ITEM	QTY	PART NUMBER	DESCRIPTION
1	5	3/8"	LOCK WASHER
2	5	3/8 - 16	HEX NUT
3	5	3/8 - 16 x 1 1/4	HEX BOLT
4	2	3/8"	WASHER
5	3	3/8"	FENDER WASHER



HITCH WEIGHT: 10 LBS.

INSTALL TIME: 30 MINUTES

INSTALL NOTES:

DRILLING REQUIRED

INSTALLATION STEPS

- 1) Remove spare tire. Position hitch against underside of spare tire well and rear bumper as shown. Support the hitch in place making sure it is square and centered on car. Adjust hitch fore/aft for ball/bumper clearance.
- 2) Using hitch as a template, mark and drill three (3) places in trunk floor and two (2) places in rear bumper bottom surface for 3/8" diameter screws.
- 3) Fasten hitch to car using fasteners as shown. Be certain to use fender washers inside the trunk.
- 4) Torque all 3/8" fasteners to 30 lb-ft.

PERIODICALLY CHECK THIS RECEIVER HITCH TO ENSURE THAT ALL FASTENERS ARE TIGHT AND THAT ALL STRUCTURAL COMPONENTS ARE SOUND.

Curt Manufacturing Inc., warrants this product to be free of defects in material and/or workmanship at the time of retail purchase by the original purchaser. If the product is found to be defective, Curt Manufacturing Inc., may repair or replace the product, at their option, when the product is returned, prepaid, with proof of purchase. Alteration to, misuse of, or improper installation of this product voids the warranty. Curt Manufacturing Inc.'s liability is limited to repair or replacement of products found to be defective, and specifically excludes liability for incidental or consequential loss or damage.

10/30/06