

INSTALLATION INSTRUCTIONS

EQUIPMENT REQUIRED:

WIRING ACCESS LOCATION: PC3, PC4

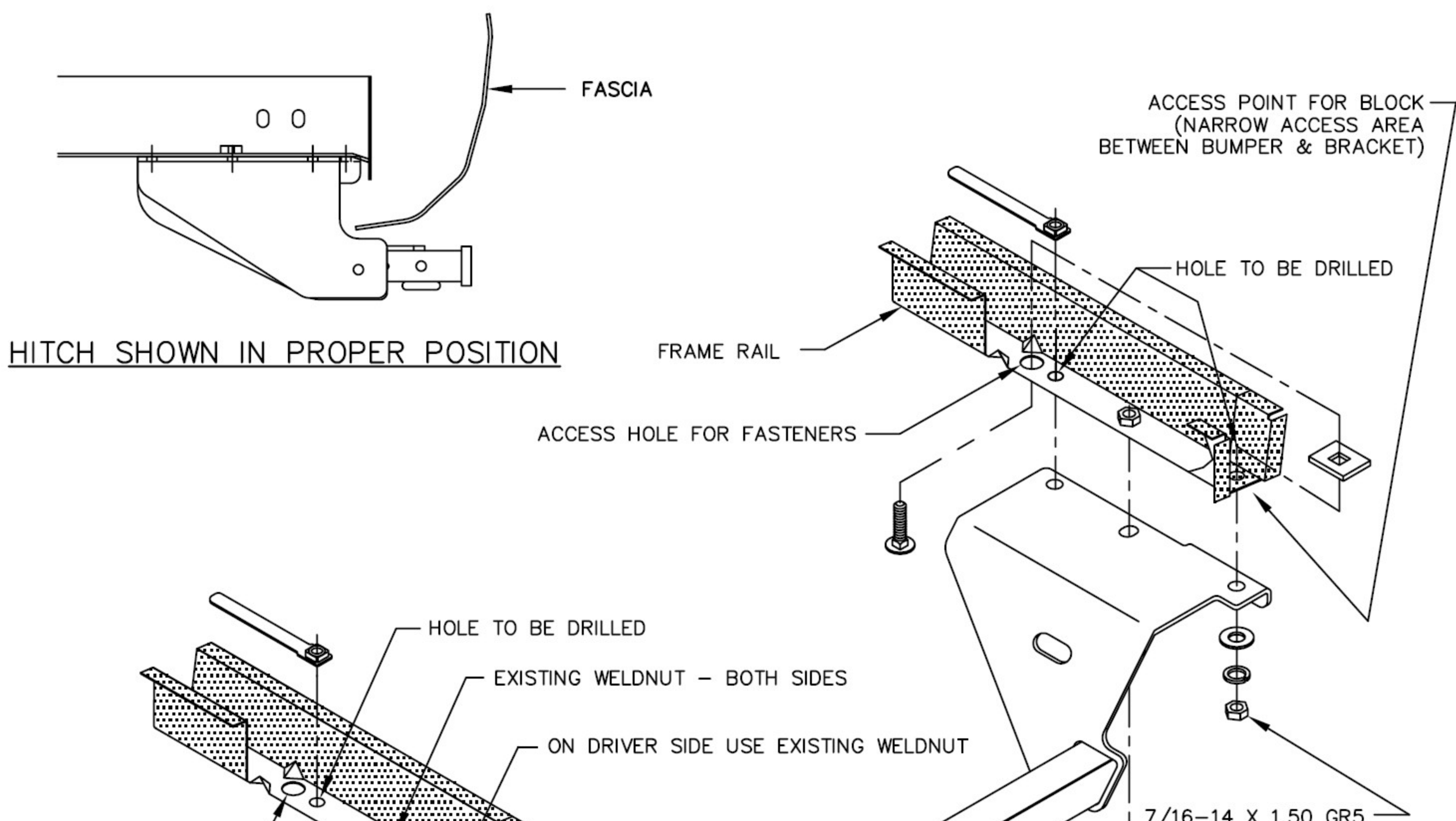
DRILL BITS: 1/2

HITCH REQUIRES 1/2" PIN AND CLIP

WRENCHES: (TIGHTEN ALL FASTENERS WITH TORQUE WRENCH) 3/4, 9/16, 11/16, 13mm, 16mm, 17mm

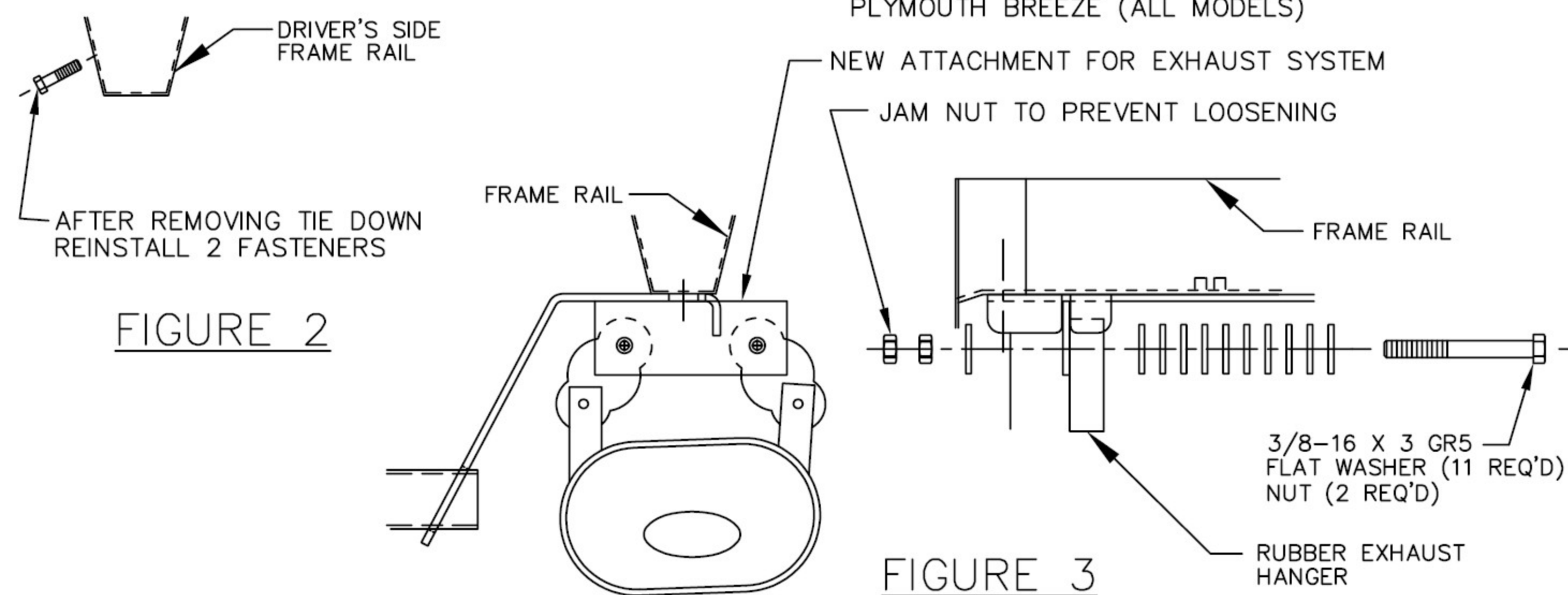
VEHICLE	HITCH NO.
CHRYSLER CIRRUS (ALL MODELS) CHRYSLER SEBRING (4 DOOR) DODGE STRATUS (4 DOOR) PLYMOUTH BREEZE (ALL MODELS)	36801

3500 LB MAX GROSS TRAILER WT
300 LB MAX TONGUE WEIGHT
DO NOT EXCEED TOWING VEHICLE RATINGS



INSTALLATION INSTRUCTIONS

VEHICLE	HITCH NO.
CHRYSLER CIRRUS (ALL MODELS) CHRYSLER SEBRING (4 DOOR) DODGE STRATUS (4 DOOR) PLYMOUTH BREEZE (ALL MODELS)	36801



1. REMOVE TIE-DOWN HOOK ON DRIVER'S SIDE FRAME RAIL, IF PRESENT.
NOTE: REINSTALL TWO (2) OF THE FASTENERS IN THE SIDE OF THE FRAME, SEE FIGURE 2.
2. LOWER EXHAUST SYSTEM BY REMOVING TWO 8mm BOLTS AND DISCONNECTING THE EXHAUST HANGER BRACKET FROM THE FRAME RAIL. DETACH THE RUBBER EXHAUST HANGER BY PRYING IT OFF THE EXHAUST HANGER BRACKET. DISCONNECT THE RUBBER EXHAUST HANGER FORWARD OF THE MUFFLER.
3. REMOVE THE 10mm BUMPER BRACKET BOLT, ON THE BOTTOM OF PASSENGER SIDE FRAME RAIL.
4. RAISE HITCH INTO POSITION AND LOOSELY INSTALL THE THREE 10mm BOLTS PROVIDED INTO EXISTING WELDNUITS.
5. ON PRE-2002 MODELS
USING THE HITCH AS A TEMPLATE DRILL 1/2" HOLES IN THE FRAME RAIL AT THE FORWARD ATTACHMENT ON EACH SIDE AND AT THE REAR ATTACHMENT ON THE PASSENGER SIDE.
ON 2002 & LATER MODELS
USING THE HITCH AS A TEMPLATE DRILL 1/2" HOLES IN THE FRAME RAIL AT THE REARWARD ATTACHMENT ON EACH SIDE. FORWARD ATTACHMENT HOLES ARE EXISTING.
6. INSTALL 7/16 FASTENERS AS SHOWN IN FIGURES 1 OR 4.
NOTE: LOOSENING THE CENTER ATTACHMENT MAY EASE INSTALLATION.
7. USING ACCESS HOLE IN FRAME INSTALL HANDLE NUT ASS'Y AS SHOWN IN FIGURES 1 OR 4. INSTALL REMAINING

INSTALLATION INSTRUCTIONS

VEHICLE	HITCH NO.
CHRYSLER CIRRUS (ALL MODELS) CHRYSLER SEBRING (4 DOOR) DODGE STRATUS (4 DOOR) PLYMOUTH BREEZE (ALL MODELS)	36801

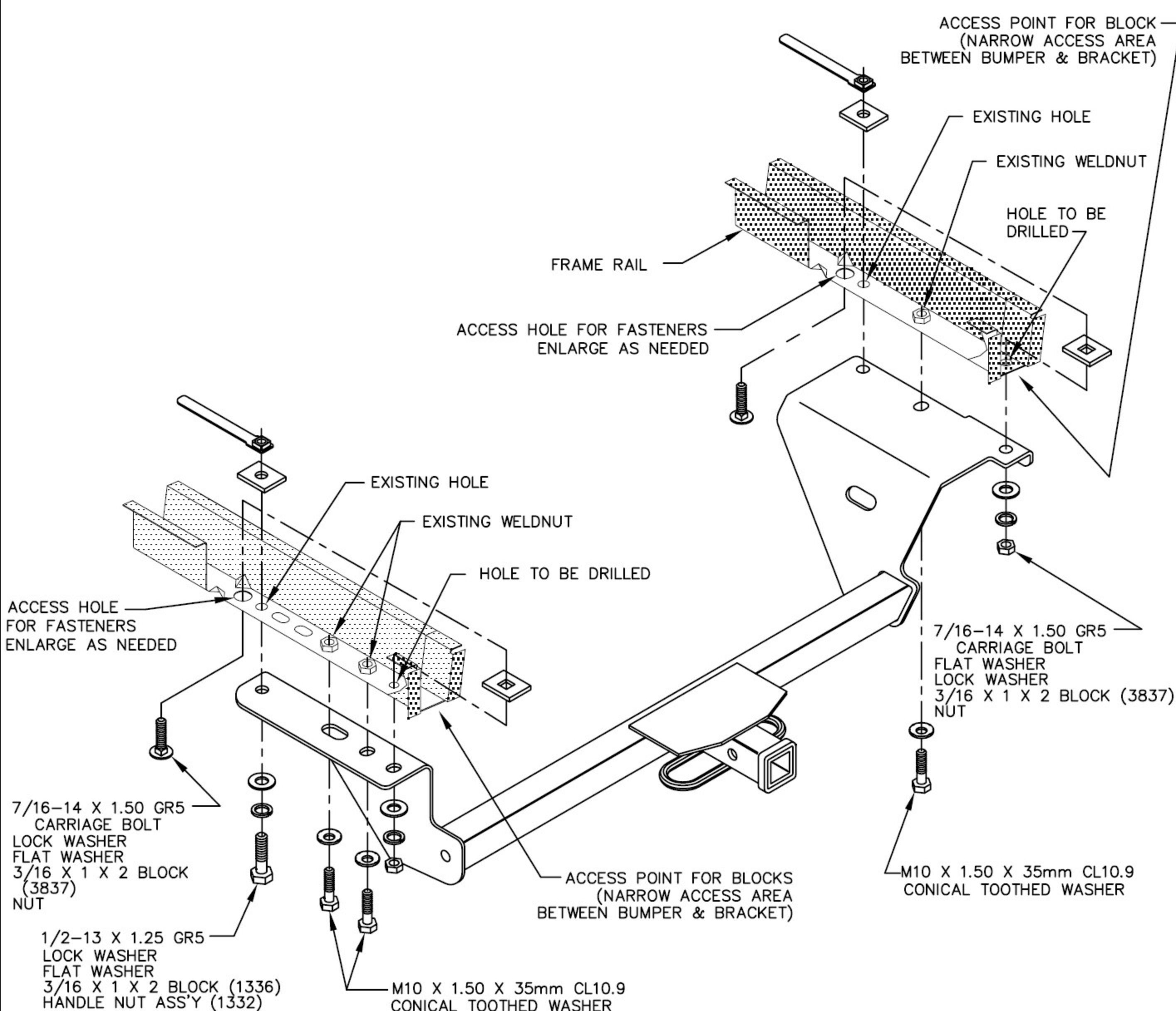


FIGURE 4
2002 & LATER MODELS

THIS PRODUCT COMPLIES WITH SAFETY SPECIFICATIONS AND REQUIREMENTS FOR CONNECTING DEVICES AND TOWING SYSTEMS OF THE STATE OF NEW YORK AND V.E.S.C. REGULATION V-5.

APPROX WEIGHT (LB.)	29	FASTENER KIT NO.	F36301
---------------------	----	------------------	--------

NOTE: Check hitch frequently, making sure all fasteners and ball are properly tightened. If hitch is removed, plug all holes in trunk pan or other body panels to prevent entry of water and exhaust fumes. A hitch or ball which has been damaged should be removed and replaced. Observe safety precautions when working beneath a vehicle and wear eye protection. Follow car maker's specs for maximum trailer weight and tongue weight. Do not cut access or attachment holes with a torch.

TOWING PRODUCTS
Plymouth, Michigan